



Prime Contractor Experience

Heeter Construction, Inc.

Dam Safety Assurance Phase 4 Bluestone Dam Hinton, West Virginia



SCOPE OF WORK

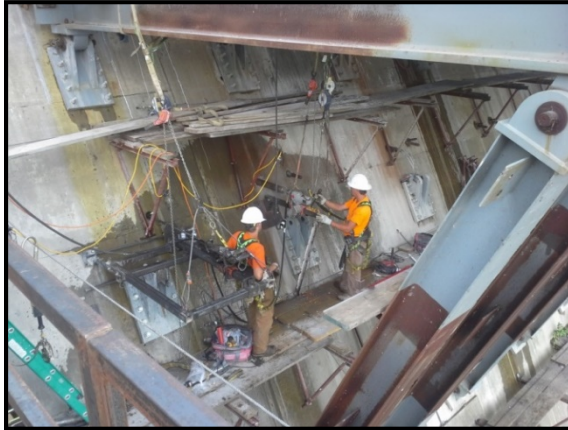
The primary scope of work on the Bluestone Dam, DSA Phase 4 Project includes the installation of 278 High Capacity Multi-Strand Rock Anchors. The majority of the anchors are 61 strand and up to 270 feet in length across the length of the dam and at multiple elevations.

The project includes working above water from elevated platforms and barges utilizing multi-sized crane support. Platform configurations allow drilling and grouting operations to occur simultaneously in multiple locations with multiple crews.

The elevated work platform was designed to support drilling rigs and support cranes up to an 80 ton crawler. To support these high loads, each pier of the work platform was held in place by a series of Spin-Lock Anchors. Over 1,000 Spin-Lock anchors are required over the various platform elevation changes. The spin locks consisted of a 1-3/4 inch bolt installed in a 3-1/2 inch drill hole stressed to 165 kips.



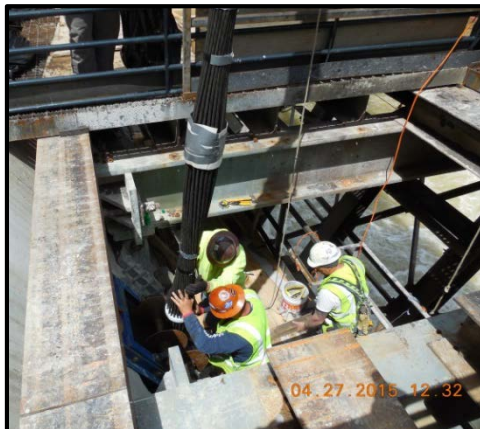
Bluestone Dam DSA Phase 4 Project (continued) Hinton, West Virginia



Spin-Lock Anchors (left); Crane Support (right)



Drilling using Modified Platform Configuration



High Capacity, Multi-Strand Anchor Installation